

2026 SALE

KAIWARA

EST. 1971



BULL WALK

Thursday 21 May

BULL SALE

Friday 12 June
11am

CONTACT

George Johns
022 198 3599

www.kaiwarafarm.com



AGENTS

Commission payable to purchasers nominated firm.

Rural Livestock

Anthony Cox.....	027 208 3071
Robbie Reid	027 473 0868
Hayden McCarthy.....	027 473 0802
Donald Cooke	0274 730 854
Aaron Leckie.....	0274 730 808
Glen Armstrong.....	0274 730 482
Thomas Mallon.....	0272 768 535
Richard Cretney.....	027 201 0912

PGG Wrightsons

Nick Denton	027 434 4094
Stu Uren	027 591 0446
Simon Eddington	027 590 8612
Alex Horn	027 591 8449
Tom Dobson	027 518 7134

Hazlett Rural

Alby Orchard.....	027 534 5753
John Waghorn.....	027 462 0121
Tim Rutherford.....	027 462 0135



BULL SALE

FRIDAY 12 JUNE

BULL WALK

THURSDAY 21 MAY

TABLE OF

CONTENTS

Breeders Note	2
About Kaiwara Angus	3
Meet The Team	4
Sire Bulls	7
Lots	13
Conditions of Sale	33
EBV Explanations	34
FMG Insurance Form	37
Purchasers Slip	39

BREEDERS NOTE

Welcome to our 10th annual on-farm bull sale and another year of breeding at Kaiwara.

Firstly, thank you. To our clients, agents, and supporters — your backing means a great deal to us. We don't take it for granted, and it's what allows us to keep investing in the herd and the programme year on year.

The season has been positive with strong grass growth coupled with great lamb and beef prices. With a backdrop of global uncertainty, rising diesel prices, and increasing input costs — efficiency on farm has never mattered more. A good bull remains one of the most cost-effective investments you can make, doing a lot of heavy lifting in your system year after year.

That thinking underpins our programme. We are focused on breeding cattle that are fit for purpose — structurally sound, easy-doing, and able to perform in hill country environments. Our bulls are selected with longevity, temperament, and real-world performance in mind.

This year's lineup reflects that focus. We're pleased with the depth and consistency right through the offering, along with progeny coming through from proven sires that continue to deliver. These are cattle we stand behind — not just on sale day, but in the seasons that follow.

We will again be offering independent structural assessments, giving buyers added confidence in their selections.

Our sale will be held on-farm at Kaiwara, 13th June at 11 am. As always, everyone is welcome. If you'd like to discuss the catalogue beforehand or arrange a visit, please don't hesitate to get in touch.

We look forward to catching up on the day — and continuing to build long-term relationships with you all.

George Johns
Breeder

WHY KAIWARA

- Semen tested
- Cows Hill country proven
- Performance focused
- 3 year breakdown guarantee
- Quick backup for breakdowns
- Meaty and quiet bulls
- No pushy salesman tactics
- Structural assessment

ABOUT US

At Kaiwara Farm, we're proud to be a family-owned and operated beef breeding operation with a long-standing legacy.

Since establishing our Angus stud in 1971, we've remained focused on breeding cattle that are fit for purpose — healthy, structurally sound, and able to perform in commercial hill country environments.

Kaiwara is situated on a 1000ha hill country farm near Culverden in North Canterbury. Our environment is a big part of our programme — the cattle have to work here first. That means they are bred for resilience, soundness, and the ability to thrive under real farming conditions.

Over the past five decades, we've built a herd focused on consistency and practicality. We're not chasing extremes — just good, honest cattle that do the job well. Fertility, temperament, and longevity are non-negotiables.

We believe strong outcomes on farm start with the right genetics. That's why every bull is carefully selected and assessed, with a focus on structure, performance, and ease of doing. Our aim is to provide bulls that integrate seamlessly into your system and add value over the long term.



MEET THE TEAM

We have an awesome bunch of humans that make Kaiwara Angus possible, while we can't name them all, here are some of the key players.

Meet the Team



George Johns

Farm owner. He is as relaxed as his bulls.



Meet the Team



Penny Johns

Tussock grubber, wetland developer and reluctant farm accountant.



Meet the Team



Jordan Birkett

Stock Manager. Sharp operator who, when not here, is probably out hunting.



Meet the Team



Libby Andrews

Tough as nails – an epic multitasker, often tussock grubbing with a toddler in tow.



Meet the Team



Eva Johns

Quality Control. She likes to make things special for people.



Meet the Team



Tilly Johns

Up for the big jobs. She is full of beans!



Meet the Team



Tommy Johns

Has diesel fever. He can be found wherever the wheels are.



Meet the Team



Beau Shield

Never misses a sale – now on our board. Likes to critique stock from the mal mai.



Meet the Team



Bruce Johns

Stud founder and character. He can be found frequenting cafes and art galleries.



Thank you to all our loyal supporters and friends who show up year-on-year to make our sale a success.

ANGUSPURE PARTNER STUD

AngusPure NZ has teamed up with 91 Angus studs who share in our vision - to focus on the end consumer. This stud is proud to be named as one of them, and by using the finest genetics and implementing best management practice they can help you produce more premium quality Angus beef.

Only our AngusPure Partner studs display these devices in their sale catalogues. They indicate bulls endorsed by AngusPure NZ.



ANGUSPURE ENDORSED BULLS

AngusPure NZ continues to endorse bulls for sale that are either at or above +\$131 for the AngusPure index (API) and at or above +\$118 for the AngusPRO index (\$PRO). These indexes give commercial farmers confidence that by using these selection tools, bulls are most likely to leave progeny with superior carcase quality. At the same time, they achieve desirable outcomes for self-replacing herds, as the AngusPure & AngusPRO indexes still reward cattle with strong maternal attributes like calving ease, scrotal and growth, along with carcase weight.

To qualify, bulls will be => +\$131 for AngusPure index OR => +\$118 for AngusPRO index



EXTRA ANGUSPURE ENDORSEMENT FOR MARBLING

In addition to the 'A', and to assist bull buyers who wish to select for more marbling AngusPure is rewarding those animals that are either at or above +\$147 for the AngusPure Index (API) and at or above +\$132 for the AngusPRO Index (\$PRO). In addition to this, they must have an IMF EBV (for marbling) equal to or greater than +2.6. These bulls will be awarded an 'A+' endorsement. Marbling is one of the very highest eating quality attributes and is necessary in order to meet some of the highest premium requirements for the export program, AngusPure Special Reserve.

To qualify, bulls will be => +\$147 for AngusPure index OR => +\$132 for AngusPRO index, and in addition all bulls must be => +2.6 for IMF EBV

AngusPure NZ recognises the need to lift the amount of marbling in our New Zealand cow genetics, in order to fill the requirements of consumers going forward. Marbling has two critical components; genetics and feeding. Feeding on a rising plane of nutrition is vital but without the right genetics, these attributes will not be able to express themselves.



Rural Livestock

Looking for stock?

**Now with over 100
agents nationwide to
help you source the
stock you need.**

AGENTS:

Hayden McCarthy - 0274 730 802

Robbie Reid - 0274 730 868

Aaron Leckie - 0274 730 808

GENETICS SPECIALISTS:

North Island

Brent Bougen - 0272 104 698

Will Maxwell - 0275 394 140

South Island

Anthony Cox - 0272 083 071

Brent Macaulay - 0212 200 850

James Kenny - 0274 730 865

NZ FARMERS **LIVESTOCK** **REDSHAW LIVESTOCK LTD**

www.rurallivestock.co.nz

SIRE BULLS



BLACK ROCK OF STERN



SIRE

MACKENZIE OF STERN^{SV}

D: STERN 09E103

S: BRAVEHEART OF STERN^{SV}

DAM

STERN M789^{SV}

D: STERN K232

S: STERN 14592

May 2026 BREEDPLAN

DIR	DTRS	GL	Birth Wt. (kg)	200 day Wt. (kg)	400 day Wt. (kg)	600 day Wt. (kg)	Mature Cow Wt. (kg)	Milk (kg)	Scrotal
+8.2	+1.3	-9.6	+1.8	+47	+88	+116	+102	+14	+3.2
84%	70%	97%	97%	96%	96%	97%	94%	89%	95%
Days to Calving	Carcase Wt. (kg)	EMA (sq.cm)	Rib fat (mm)	Rump fat (mm)	RBY (%)	IMF (%)	Docility	ANGUS NZ RBVs	
								BCS	HH
-3.7	+63	+3.6	+0.7	+2.3	-0.5	+2.2	+27.4	+0	+2.2
56%	86%	84%	84%	84%	79%	84%	93%	58%	91%
Angus Indexes									
Self Replacing Index			Angus Pure				Heifer / Dairy Terminal		
+\$115			+\$147				+\$135		

Sale notes: Great birth weight to growth spread, consistently represented in his progeny.

SIRE BULLS



KAYJAY LASER R429



SIRE

TAIMATE LASER N 22^{PV}

D: TAIMATE 1434^{SV}

S: TAIMATE LAZARUS L12^{PV}

DAM

KAYJAY ANGEL L98

D: KAYJAY ANGEL 524

S: KAYJAY BOND H521^{SV}

May 2026 BREEDPLAN

DIR	DTRS	GL	Birth Wt. (kg)	200 day Wt. (kg)	400 day Wt. (kg)	600 day Wt. (kg)	Mature Cow Wt. (kg)	Milk (kg)	Scrotal
+1	+4.6	-2.9	+6.1	+44	+84	+103	+121	+3	+1
72%	59%	84%	89%	88%	87%	88%	84%	78%	85%
Days to Calving	Carcase Wt. (kg)	EMA (sq.cm)	Rib fat (mm)	Rump fat (mm)	RBY (%)	IMF (%)	Docility	ANGUS NZ RBVs	
								BCS	HH
-5.2	+54	+1.1	+2.3	+2.7	+0.3	-0.2	+19.2	+0.1	+0.3
53%	77%	75%	76%	77%	71%	77%	73%	37%	47%
Angus Indexes									
Self Replacing Index			Angus Pure				Heifer / Dairy Terminal		
+\$148			+\$133				+\$103		

Sale notes: Purchased for \$24,000, strong outlook with traditional appeal.

SIRE BULLS

MEADOWSLEA P599



SIRE

MEADOWSLEA L226^{SV}

D: MEADOWSLEA H104

S: MEADOWSLEA J514

DAM

MEADOWSLEA M498^{SV}

D: MEADOWSLEA K894

S: MEADOWSLEA K703^{SV}

May 2026 BREEDPLAN

DIR	DTRS	GL	Birth Wt. (kg)	200 day Wt. (kg)	400 day Wt. (kg)	600 day Wt. (kg)	Mature Cow Wt. (kg)	Milk (kg)	Scrotal
-1	-2.9	-2.7	+4.4	+39	+79	+106	+94	+20	+2.3
73%	59%	82%	93%	91%	90%	92%	86%	77%	91%
Days to Calving	Carcase Wt. (kg)	EMA (sq.cm)	Rib fat (mm)	Rump fat (mm)	RBY (%)	IMF (%)	Docility	ANGUS NZ RBVs	
								BCS	HH
-3.4	+39	+5.4	+2.7	+1.7	+0	+1.5	+22.2	+0	+0.7
57%	80%	78%	79%	79%	74%	80%	72%	40%	11%

Angus Indexes

Self Replacing Index	Angus Pure	Heifer / Dairy Terminal
+\$83	+\$86	+\$95

SIRE BULLS

KAIWARA 7/20

A

Born: 08/08/2020

HBN: 131440207

SIRE

MUSGRAVE 316 STUNNER^{PV}
 D: MCATL BLACKBIRD 831-1378
 S: LD CAPITALIST 316 (IMP USA)

DAM

KAIWARA 1025
 D: KAIWARA 302
 S: KAIWARA 612

May 2026 BREEDPLAN

DIR	DTRS	GL	Birth Wt. (kg)	200 day Wt. (kg)	400 day Wt. (kg)	600 day Wt. (kg)	Mature Cow Wt. (kg)	Milk (kg)	Scrotal
+0.5	-1.8	-5	+4.5	+46	+85	+104	+92	+14	+1.4
64%	56%	82%	79%	75%	74%	78%	72%	65%	75%
Days to Calving	Carcase Wt. (kg)	EMA (sq.cm)	Rib fat (mm)	Rump fat (mm)	RBY (%)	IMF (%)	Docility	ANGUS NZ RBVs	
								BCS	HH
-5.5	+61	+6.3	+2.2	+2.6	+0.1	+1.3	+22.9		
48%	67%	64%	66%	65%	61%	66%	61%		
Angus Indexes									
Self Replacing Index			Angus Pure				Heifer / Dairy Terminal		
+\$148			+\$151				+\$104		

KAIWARA 35/22

Born: 08/09/2022

HBN: 1314402235

SIRE

KAIWARA 365/19^{SV}
 D: KAIWARA 13144013348
 S: KAIWARA 480/14^{SV}

DAM

KAIWARA 270
 D: CULVERDEN DOWNS 797
 S: KAIWARA 839

May 2026 BREEDPLAN

DIR	DTRS	GL	Birth Wt. (kg)	200 day Wt. (kg)	400 day Wt. (kg)	600 day Wt. (kg)	Mature Cow Wt. (kg)	Milk (kg)	Scrotal
-7.8	-7.1	+0.5	+6.5	+35	+71	+89	+77	+14	+1.7
54%	46%	82%	76%	72%	73%	74%	68%	61%	70%
Days to Calving	Carcase Wt. (kg)	EMA (sq.cm)	Rib fat (mm)	Rump fat (mm)	RBY (%)	IMF (%)	Docility	ANGUS NZ RBVs	
								BCS	HH
-2.8	+48	+5.4	-0.7	-0.6	+1.2	+0.4	+14.7		
37%	62%	55%	58%	58%	52%	58%	53%		
Angus Indexes									
Self Replacing Index			Angus Pure				Heifer / Dairy Terminal		
+\$88			+\$48				+\$62		

SIRE BULLS

RANGATIRA 20-1024

Born: 08/08/2020

HBN: 158190201024

SIRE

TANGIHAU TOPGUN 17436^{PV}

D: TANGIHAU J100

S: STERN 477

DAM

KAHARAU 12-9671

D: KAHARAU PRIDE 7383

S: DANDALOO ADMIRAL 741

May 2026 BREEDPLAN

DIR	DTRS	GL	Birth Wt. (kg)	200 day Wt. (kg)	400 day Wt. (kg)	600 day Wt. (kg)	Mature Cow Wt. (kg)	Milk (kg)	Scrotal
-3.5	-0.3	-0.9	+5.8	+40	+74	+99	+91	+20	+1.3
59%	47%	64%	74%	74%	73%	75%	71%	65%	64%
Days to Calving	Carcase Wt. (kg)	EMA (sq.cm)	Rib fat (mm)	Rump fat (mm)	RBY (%)	IMF (%)	Docility	ANGUS NZ RBVs	
								BCS	HH
-1.5	+53	+7.7	-0.1	+0.4	+0.9	+1.7	+24.5	-0.1	-0.5
43%	65%	61%	63%	63%	58%	62%	57%	34%	30%

Angus Indexes

Self Replacing Index	Angus Pure	Heifer / Dairy Terminal
+\$62	+\$68	+\$86

KNOWLA SO RIGHT S48 (IMP AUS)

A+

Born: 01/03/2021

HBN: AUBLA21S48

SIRE

BALDRIDGE ALTERNATIVE E125 (IMP USA)^{PV}

D: BALDRIDGE BLACKBIRD A030

S: POSS EASY IMPACT 0119

DAM

KNOWLA DESIGNER L21

D: KNOWLA DESIGNER C16

S: WATTLETOP SITZ 458N E111

May 2026 BREEDPLAN

DIR	DTRS	GL	Birth Wt. (kg)	200 day Wt. (kg)	400 day Wt. (kg)	600 day Wt. (kg)	Mature Cow Wt. (kg)	Milk (kg)	Scrotal
+6.9	+0.8	-5.1	+3.2	+55	+100	+130	+114	+16	+2.4
86%	75%	99%	99%	98%	98%	98%	94%	88%	98%
Days to Calving	Carcase Wt. (kg)	EMA (sq.cm)	Rib fat (mm)	Rump fat (mm)	RBY (%)	IMF (%)	Docility	ANGUS NZ RBVs	
								BCS	HH
-4.6	+81	+7.1	+0.6	+2.4	-0.4	+4.9	+27.6		
59%	91%	91%	90%	90%	82%	91%	98%		

Angus Indexes

Self Replacing Index	Angus Pure	Heifer / Dairy Terminal
+\$150	+\$216	+\$143

BUYING ONLINE?

- This sale will be held as a HYBRID ON-FARM auction on bidr (bidr.co.nz).
- There will be online bidding and a livestream of the sale for bidders.
- All online purchasers must register with bidr through an account with a bidr partner agency before sale day.
- For help with signing up or registering, contact the bidr team on 0800 TO BIDR (0800 86 2437) or email enquiries@bidr.co.nz

Alternatively, contact your local bidr® representative:

Upper North Island Territory Manager

Bruno Dos Santos
Bruno.Santos@bidr.co.nz
027 221 8276

Upper South Island Territory Manager

McKenzie Alfeld
Mckenzie.Alfeld@bidr.co.nz
027 341 8066

Lower North Island Territory Manager

Liv Manley
Olivia.Manley@bidr.co.nz
027 348 6354

Lower South Island Territory Manager

Mya Reid
Mya.Reid@bidr.co.nz
021 204 5824

KAIWARA: LOT 1

Born: 27/08/2024

HBN: 13144024243



Tattoo: 24243

SIRE

KAIWARA 35/22^{SV}

D: KAIWARA 270

S: KAIWARA 365/19^{SV}

DAM

KAIWARA 14/504

D: KAIWARA 721

S: TURIROA BRAVO 10660

May 2026 BREEDPLAN

DIR	DTRS	GL	Birth Wt. (kg)	200 day Wt. (kg)	400 day Wt. (kg)	600 day Wt. (kg)	Mature Cow Wt. (kg)	Milk (kg)	Scrotal
-6.4	-7.3	+1	+6.4	+36	+68	+93	+82	+13	+1.7
44%	35%	54%	72%	66%	68%	72%	63%	46%	48%
Days to Calving	Carcase Wt. (kg)	EMA (sq.cm)	Rib fat (mm)	Rump fat (mm)	RBY (%)	IMF (%)	Docility	ANGUS NZ RBVs	
								BCS	HH
-2.4	+47	+4.3	+0.3	+0.8	+1	+0.2	+17.3	+0	+0.4
29%	55%	48%	51%	51%	46%	47%	38%	20%	6%
Angus Indexes									
Self Replacing Index			Angus Pure				Heifer / Dairy Terminal		
+\$77			+\$51				+\$69		

Sale notes: Very safe pedigree with Braveheart and laser in the background, real easy doing

Purchaser:..... Price \$.....

KAIWARA: LOT 2

Born: 25/08/2024

HBN: 13144024162



Tattoo: 24162

SIRE

KAYJAY LASER R429^{PV}

D: KAYJAY ANGEL L98

S: TAIMATE LASER N 22^{PV}

DAM

KAIWARA 545/14

D: KAIWARA 571

S: KAIWARA BOLT 931

May 2026 BREEDPLAN

DIR	DTRS	GL	Birth Wt. (kg)	200 day Wt. (kg)	400 day Wt. (kg)	600 day Wt. (kg)	Mature Cow Wt. (kg)	Milk (kg)	Scrotal
+1.1	+2	-1.9	+4.9	+39	+79	+92	+91	+8	+1.2
51%	39%	55%	74%	69%	70%	73%	66%	55%	57%
Days to Calving	Carcase Wt. (kg)	EMA (sq.cm)	Rib fat (mm)	Rump fat (mm)	RBY (%)	IMF (%)	Docility	ANGUS NZ RBVs	
								BCS	HH
-4.3	+48	+6	+1.5	+2.1	+1	+0	+18.5	+0	+0.4
33%	59%	53%	57%	57%	52%	53%	42%	20%	6%
Angus Indexes									
Self Replacing Index			Angus Pure				Heifer / Dairy Terminal		
+\$149			+\$129				+\$103		

Sale notes: Hard to go past this fella, semen taken for in herd use, good structurals

Purchaser:..... Price \$.....

KAIWARA: LOT 3

Born: 08/09/2024

HBN: 13144024295



Tattoo: 24295

SIRE

MEADOWSLEA P599^{SV}

D: MEADOWSLEA M498^{SV}

S: MEADOWSLEA L226^{SV}

DAM

KAIWARA 594/14

D: KAIWARA 885

S: TE MANIA 09 450

May 2026 BREEDPLAN

DIR	DTRS	GL	Birth Wt. (kg)	200 day Wt. (kg)	400 day Wt. (kg)	600 day Wt. (kg)	Mature Cow Wt. (kg)	Milk (kg)	Scrotal
-2.7	-2.8	-2.8	+5.1	+44	+80	+109	+90	+17	+2.2
53%	44%	60%	74%	70%	70%	74%	67%	55%	61%
Days to Calving	Carcase Wt. (kg)	EMA (sq.cm)	Rib fat (mm)	Rump fat (mm)	RBY (%)	IMF (%)	Docility	ANGUS NZ RBVs	
								BCS	HH
-4.3	+52	+4.2	+1.3	+1.7	-0.1	+1.7	+21.8	+0	+0.4
39%	60%	56%	59%	59%	54%	57%	53%	20%	6%
Angus Indexes									
Self Replacing Index			Angus Pure				Heifer / Dairy Terminal		
+\$104			+\$112				+\$90		

Sale notes: Good balanced data set across the board, great depth

Purchaser:..... Price \$.....

KAIWARA: LOT 4

Born: 04/09/2024

HBN: 13144024137

SIRE

MEADOWSLEA P599^{SV}

D: MEADOWSLEA M498^{SV}

S: MEADOWSLEA L226^{SV}

DAM

KAIWARA 509/14

D: KAIWARA 880

S: KAIWARA 617

May 2026 BREEDPLAN									
DIR	DTRS	GL	Birth Wt. (kg)	200 day Wt. (kg)	400 day Wt. (kg)	600 day Wt. (kg)	Mature Cow Wt. (kg)	Milk (kg)	Scrotal
-3.3	-2.3	-2.1	+5	+32	+71	+92	+93	+14	+1.6
50%	38%	52%	72%	68%	68%	66%	61%	51%	55%
Days to Calving	Carcase Wt. (kg)	EMA (sq.cm)	Rib fat (mm)	Rump fat (mm)	RBY (%)	IMF (%)	Docility	ANGUS NZ RBVs	
								BCS	HH
-3.6	+39	+2	+2	+1.6	+0.3	+0.4	+17.4	+0	+0.4
34%	56%	50%	52%	52%	48%	52%	43%	20%	6%
Angus Indexes									
Self Replacing Index			Angus Pure				Heifer / Dairy Terminal		
+\$85			+\$57				+\$78		

Sale notes: Out of a 11yr old dam

Purchaser:..... Price \$.....

KAIWARA: LOT 5

Born: 19/09/2024

HBN: 1314402480

SIRE

KAYJAY LASER R429^{PV}

D: KAYJAY ANGEL L98

S: TAIMATE LASER N 22^{PV}

DAM

KAIWARA 641/14

D: KAIWARA 891

S: KAIWARA BOLT 931

May 2026 BREEDPLAN									
DIR	DTRS	GL	Birth Wt. (kg)	200 day Wt. (kg)	400 day Wt. (kg)	600 day Wt. (kg)	Mature Cow Wt. (kg)	Milk (kg)	Scrotal
+0	+2.4	-2.2	+5.3	+41	+83	+102	+116	+9	+1.2
50%	40%	56%	72%	68%	69%	73%	65%	52%	56%
Days to Calving	Carcase Wt. (kg)	EMA (sq.cm)	Rib fat (mm)	Rump fat (mm)	RBY (%)	IMF (%)	Docility	ANGUS NZ RBVs	
								BCS	HH
-4.9	+57	-0.8	+0.5	+1.1	+0.4	+0.1	+20.9	+0	+0.4
34%	58%	53%	56%	56%	51%	53%	46%	20%	6%
Angus Indexes									
Self Replacing Index			Angus Pure				Heifer / Dairy Terminal		
+\$126			+\$103				+\$97		

Sale notes: Out of a good old dam coming up 12yrs

Purchaser:..... Price \$.....

KAIWARA: LOT 6



Born: 21/08/2024

HBN: 13144024103



Tattoo: 24103

SIRE

KAIWARA 7/20^{SV}

D: KAIWARA 1025

S: MUSGRAVE 316 STUNNER^{PV}

DAM

KAIWARA 556/14

D: KAIWARA 765

S: KAIWARA BOLT 931

May 2026 BREEDPLAN

DIR	DTRS	GL	Birth Wt. (kg)	200 day Wt. (kg)	400 day Wt. (kg)	600 day Wt. (kg)	Mature Cow Wt. (kg)	Milk (kg)	Scrotal
+1.4	-0.5	-4	+4.9	+44	+87	+108	+97	+16	+1.7
48%	38%	57%	70%	66%	66%	71%	62%	48%	52%
Days to Calving	Carcase Wt. (kg)	EMA (sq.cm)	Rib fat (mm)	Rump fat (mm)	RBY (%)	IMF (%)	Docility	ANGUS NZ RBVs	
								BCS	HH
-5.9	+60	+4.6	+2.7	+3	+0	+1.2	+18.1	+0	+0.4
31%	55%	49%	52%	52%	47%	49%	43%	20%	6%
Angus Indexes									
Self Replacing Index			Angus Pure				Heifer / Dairy Terminal		
+\$149			+\$152				+\$108		

Sale notes: Sired by a homebred sire 7/20 sold to Tim Hyde

Purchaser:..... Price \$.....



UNMATCHED GENETICS EXPERTISE

PGG Wrightson Genetics is New Zealand's only team of dedicated livestock genetics specialists.

CONTACT YOUR LOCAL REP FOR EXPERT ADVICE.

SIMON EDDINGTON

Upper South Island - Genetics Rep
027 590 8612

STEWART UREN

Canterbury - Livestock Rep
027 591 0446

ALEX HORN

Canterbury - Livestock Rep
027 591 8449

TOM DOBSON

Canterbury - Livestock Rep
027 518 7134

GRANT NORDSTROM

Canterbury - Regional Livestock
Manager
027 434 4064

JESSE HOUSTON

Canterbury - Livestock Rep
027 434 4091

DAVID KELK

Canterbury - Livestock Rep
027 434 4086

JOHN MCKONE

Canterbury - Genetics Rep &
Auctioneer
027 229 9375

NIC DENTON

Canterbury - Livestock Rep
027 434 4094

GLENN PEDDIE

Canterbury - Livestock Rep
027 200 2232

For more information go to
pggwrightson.co.nz/genetics

 fb.com/pgwgenetics
 instagram.com/pgwgenetics

Scan here to go to
our **Genetics** Hub



KAIWARA: LOT 7

Born: 23/08/2024

HBN: 13144024130

SIRE

MEADOWSLEA P599^{SV}

D: MEADOWSLEA M498^{SV}

S: MEADOWSLEA L226^{SV}

DAM

KAIWARA 633/14

D: KAIWARA 367

S: KAIWARA BOLT 931

May 2026 BREEDPLAN

DIR	DTRS	GL	Birth Wt. (kg)	200 day Wt. (kg)	400 day Wt. (kg)	600 day Wt. (kg)	Mature Cow Wt. (kg)	Milk (kg)	Scrotal
-0.9	-2.4	-2.5	+5	+38	+77	+100	+94	+16	+1.8
51%	39%	53%	73%	69%	69%	73%	66%	51%	56%
Days to Calving	Carcass Wt. (kg)	EMA (sq.cm)	Rib fat (mm)	Rump fat (mm)	RBY (%)	IMF (%)	Docility	ANGUS NZ RBVs	
								BCS	HH
-3.7	+45	+5.3	+2.5	+2.6	+0.2	+1	+20.5	+0	+0.4
35%	58%	53%	56%	56%	51%	53%	43%	20%	6%
Angus Indexes									
Self Replacing Index			Angus Pure				Heifer / Dairy Terminal		
+\$100			+\$94				+\$94		

Sale notes:

Purchaser:..... Price \$.....

KAIWARA: LOT 8

Born: 16/08/2024

HBN: 131440248

SIRE

BLACK ROCK OF STERN^{PV}

D: STERN M789^{SV}

S: MACKENZIE OF STERN^{SV}

DAM

KAIWARA 482/14

D: KAIWARA 467

S: KAIWARA BOLT 931

May 2026 BREEDPLAN

DIR	DTRS	GL	Birth Wt. (kg)	200 day Wt. (kg)	400 day Wt. (kg)	600 day Wt. (kg)	Mature Cow Wt. (kg)	Milk (kg)	Scrotal
+4.9	+0.9	-6.4	+3.9	+47	+92	+120	+121	+15	+2.7
57%	46%	65%	74%	70%	71%	74%	67%	59%	63%
Days to Calving	Carcass Wt. (kg)	EMA (sq.cm)	Rib fat (mm)	Rump fat (mm)	RBY (%)	IMF (%)	Docility	ANGUS NZ RBVs	
								BCS	HH
-3.2	+66	+2.8	-0.3	+0.6	+0.1	+1.4	+24	+0	+1.1
36%	60%	56%	58%	58%	53%	58%	57%	29%	45%
Angus Indexes									
Self Replacing Index			Angus Pure				Heifer / Dairy Terminal		
+\$100			+\$118				+\$125		

Sale notes: A bull for those looking to punch some real growth rates into there cattle

Purchaser:..... Price \$.....

KAIWARA: LOT 9

Born: 13/09/2024

HBN: 13144024106

SIRE

KAYJAY LASER R429^{PV}

D: KAYJAY ANGEL L98

S: TAIMATE LASER N 22^{PV}

DAM

KAIWARA 557/14

D: KAIWARA 1050

S: KAIWARA BOLT 931

May 2026 BREEDPLAN									
DIR	DTRS	GL	Birth Wt. (kg)	200 day Wt. (kg)	400 day Wt. (kg)	600 day Wt. (kg)	Mature Cow Wt. (kg)	Milk (kg)	Scrotal
+0.5	+2.7	-2.6	+6.2	+46	+91	+117	+128	+7	+1.7
50%	39%	53%	73%	68%	69%	73%	65%	52%	55%
Days to Calving	Carcase Wt. (kg)	EMA (sq.cm)	Rib fat (mm)	Rump fat (mm)	RBY (%)	IMF (%)	Docility	ANGUS NZ RBVs	
								BCS	HH
-4.4	+64	+0.3	+1.5	+2	+0.3	-0.2	+18.5	+0	+0.4
33%	58%	52%	56%	56%	51%	52%	43%	20%	6%
Angus Indexes									
Self Replacing Index			Angus Pure				Heifer / Dairy Terminal		
+\$129			+\$122				+\$106		

Sale notes:

Purchaser:..... Price \$.....

KAIWARA: LOT 10

Born: 15/09/2024

HBN: 13144024371

SIRE

MEADOWSLEA P599^{SV}

D: MEADOWSLEA M498^{SV}

S: MEADOWSLEA L226^{SV}

DAM

KAIWARA 13144013414

D: KAIWARA 165

S: TURIROA BRAVO 10660

May 2026 BREEDPLAN									
DIR	DTRS	GL	Birth Wt. (kg)	200 day Wt. (kg)	400 day Wt. (kg)	600 day Wt. (kg)	Mature Cow Wt. (kg)	Milk (kg)	Scrotal
-0.9	-3	-2.6	+5.1	+42	+88	+115	+103	+20	+2.4
51%	40%	55%	74%	70%	70%	74%	66%	52%	56%
Days to Calving	Carcase Wt. (kg)	EMA (sq.cm)	Rib fat (mm)	Rump fat (mm)	RBY (%)	IMF (%)	Docility	ANGUS NZ RBVs	
								BCS	HH
-2.7	+54	+3.9	+1.3	+1.2	+0	+1.2	+22.2	+0	+0.4
36%	60%	54%	57%	57%	52%	54%	45%	20%	6%
Angus Indexes									
Self Replacing Index			Angus Pure				Heifer / Dairy Terminal		
+\$80			+\$82				+\$98		

Sale notes:

Purchaser:..... Price \$.....

KAIWARA: LOT 11

Born: 28/08/2024

HBN: 13144024311

SIRE

MEADOWSLEA P599^{SV}

D: MEADOWSLEA M498^{SV}

S: MEADOWSLEA L226^{SV}

DAM

KAIWARA 653/14

D: KAIWARA 1035

S: KAIWARA BOLT 931

May 2026 BREEDPLAN

DIR	DTRS	GL	Birth Wt. (kg)	200 day Wt. (kg)	400 day Wt. (kg)	600 day Wt. (kg)	Mature Cow Wt. (kg)	Milk (kg)	Scrotal
-2.7	-3	-2.3	+5.6	+41	+79	+104	+102	+14	+1.9
51%	39%	55%	73%	69%	70%	74%	66%	53%	59%
Days to Calving	Carcass Wt. (kg)	EMA (sq.cm)	Rib fat (mm)	Rump fat (mm)	RBY (%)	IMF (%)	Docility	ANGUS NZ RBVs	
								BCS	HH
-3.2	+47	+4.7	+1.6	+1.3	+0.3	+0.9	+23.2	+0	+0.4
35%	59%	54%	57%	57%	52%	54%	44%	20%	6%
Angus Indexes									
Self Replacing Index			Angus Pure				Heifer / Dairy Terminal		
+\$89			+\$83				+\$88		

Sale notes:

Purchaser:..... Price \$.....

KAIWARA: LOT 12



Born: 28/08/2024

HBN: 13144024127

SIRE

KAIWARA 7/20^{SV}

D: KAIWARA 1025

S: MUSGRAVE 316 STUNNER^{PV}

DAM

KAIWARA 13144013409

D: KAIWARA 832

S: KAIWARA 617

May 2026 BREEDPLAN

DIR	DTRS	GL	Birth Wt. (kg)	200 day Wt. (kg)	400 day Wt. (kg)	600 day Wt. (kg)	Mature Cow Wt. (kg)	Milk (kg)	Scrotal
-0.9	+1	-3.1	+4.7	+42	+80	+95	+91	+13	+1.3
47%	37%	52%	71%	66%	66%	71%	62%	47%	51%
Days to Calving	Carcass Wt. (kg)	EMA (sq.cm)	Rib fat (mm)	Rump fat (mm)	RBY (%)	IMF (%)	Docility	ANGUS NZ RBVs	
								BCS	HH
-5	+56	+5.1	+2.1	+2.6	+0.5	+0.7	+19.3	+0	+0.4
31%	54%	48%	52%	52%	47%	48%	41%	20%	6%
Angus Indexes									
Self Replacing Index			Angus Pure				Heifer / Dairy Terminal		
+\$144			+\$132				+\$95		

Sale notes: Another 7/20 son sired by Musgrave stunner used as a outcross sire with type and performance

Purchaser:..... Price \$.....

KAIWARA: LOT 13

Born: 01/09/2024

HBN: 13144024284

SIRE

MEADOWSLEA P599^{SV}

D: MEADOWSLEA M498^{SV}

S: MEADOWSLEA L226^{SV}

DAM

KAIWARA 571/14

D: KAIWARA 1008

S: TE MANIA 09 450

May 2026 BREEDPLAN

DIR	DTRS	GL	Birth Wt. (kg)	200 day Wt. (kg)	400 day Wt. (kg)	600 day Wt. (kg)	Mature Cow Wt. (kg)	Milk (kg)	Scrotal
-0.8	-2.2	-3.5	+4.8	+39	+71	+105	+88	+17	+2.1
53%	44%	59%	74%	70%	70%	74%	68%	56%	62%
Days to Calving	Carcass Wt. (kg)	EMA (sq.cm)	Rib fat (mm)	Rump fat (mm)	RBY (%)	IMF (%)	Docility	ANGUS NZ RBVs	
								BCS	HH
-3.4	+43	-0.4	+1.9	+2	-0.7	+1.7	+19.4	+0	+0.4
38%	61%	56%	59%	59%	54%	56%	51%	20%	6%
Angus Indexes									
Self Replacing Index			Angus Pure				Heifer / Dairy Terminal		
+\$64			+\$74				+\$90		

Sale notes: Another safe bull from 599 out of a older dam

Purchaser:..... Price \$.....

KAIWARA: LOT 14

Born: 22/09/2024

HBN: 13144024326

SIRE

MEADOWSLEA P599^{SV}

D: MEADOWSLEA M498^{SV}

S: MEADOWSLEA L226^{SV}

DAM

KAIWARA 616/14

D: KAIWARA 814

S: TURIROA BRAVO 10660

May 2026 BREEDPLAN

DIR	DTRS	GL	Birth Wt. (kg)	200 day Wt. (kg)	400 day Wt. (kg)	600 day Wt. (kg)	Mature Cow Wt. (kg)	Milk (kg)	Scrotal
-1.6	-2.8	-2.9	+4.9	+38	+77	+104	+96	+17	+2.2
52%	41%	55%	74%	70%	70%	74%	67%	52%	58%
Days to Calving	Carcass Wt. (kg)	EMA (sq.cm)	Rib fat (mm)	Rump fat (mm)	RBY (%)	IMF (%)	Docility	ANGUS NZ RBVs	
								BCS	HH
-2.4	+46	+4.1	+1.2	+0.9	+0.4	+0.9	+21.8	+0	+0.4
37%	59%	54%	57%	57%	52%	54%	47%	20%	6%
Angus Indexes									
Self Replacing Index			Angus Pure				Heifer / Dairy Terminal		
+\$72			+\$67				+\$92		

Sale notes:

Purchaser:..... Price \$.....

KAIWARA: LOT 15

Born: 08/09/2024

HBN: 13144024240

SIRE

MEADOWSLEA P599^{SV}

D: MEADOWSLEA M498^{SV}

S: MEADOWSLEA L226^{SV}

DAM

KAIWARA 13144013343

D: KAIWARA 692

S: TURIROA BRAVO 10660

May 2026 BREEDPLAN

DIR	DTRS	GL	Birth Wt. (kg)	200 day Wt. (kg)	400 day Wt. (kg)	600 day Wt. (kg)	Mature Cow Wt. (kg)	Milk (kg)	Scrotal
-1.8	-3.4	-1.5	+4.9	+37	+73	+101	+83	+20	+1.9
51%	40%	55%	74%	69%	70%	74%	66%	52%	58%
Days to Calving	Carcass Wt. (kg)	EMA (sq.cm)	Rib fat (mm)	Rump fat (mm)	RBY (%)	IMF (%)	Docility	ANGUS NZ RBVs	
								BCS	HH
-2.4	+40	+6.1	+1.5	+1.2	+0.6	+0.9	+22.6	+0	+0.4
36%	59%	54%	57%	57%	52%	54%	46%	20%	6%
Angus Indexes									
Self Replacing Index			Angus Pure				Heifer / Dairy Terminal		
+\$71			+\$70				+\$91		

Sale notes:

Purchaser:..... Price \$.....

KAIWARA: LOT 16



Born: 23/09/2024

HBN: 1314402489

SIRE

KNOWLA SO RIGHT S48 (IMP AUS)^{PV}

D: KNOWLA DESIGNER L21

S: BALDRIDGE ALTERNATIVE E125 (IMP USA)^{PV}

DAM

KAIWARA 548/14

D: KAIWARA 1042

S: KAIWARA 617

May 2026 BREEDPLAN

DIR	DTRS	GL	Birth Wt. (kg)	200 day Wt. (kg)	400 day Wt. (kg)	600 day Wt. (kg)	Mature Cow Wt. (kg)	Milk (kg)	Scrotal
+2	+0.1	-2.7	+4.6	+45	+80	+99	+90	+11	+1.9
57%	47%	64%	73%	70%	71%	74%	67%	59%	64%
Days to Calving	Carcass Wt. (kg)	EMA (sq.cm)	Rib fat (mm)	Rump fat (mm)	RBY (%)	IMF (%)	Docility	ANGUS NZ RBVs	
								BCS	HH
-4.9	+57	+7.5	+1.1	+1.9	+0.6	+2.1	+19.9	+0	+0.4
36%	61%	60%	61%	61%	54%	63%	60%	20%	6%
Angus Indexes									
Self Replacing Index			Angus Pure				Heifer / Dairy Terminal		
+\$153			+\$165				+\$111		

Sale notes: Bit more performance of paper on this son of Knowla so right a popular bull out of Australia

Purchaser:..... Price \$.....

KAIWARA: LOT 17

Born: 12/09/2024

HBN: 13144024319



Tattoo: 24319

SIRE

MEADOWSLEA P599^{SV}

D: MEADOWSLEA M498^{SV}

S: MEADOWSLEA L226^{SV}

DAM

RANGATIRA 20-1800^{SV}

D: RANGATIRA 14-339

S: TANGIHAU TOPGUN 17436^{PV}

May 2026 BREEDPLAN

DIR	DTRS	GL	Birth Wt. (kg)	200 day Wt. (kg)	400 day Wt. (kg)	600 day Wt. (kg)	Mature Cow Wt. (kg)	Milk (kg)	Scrotal
-2.4	-2.4	-1.7	+5.3	+43	+85	+115	+107	+20	+1.2
53%	42%	58%	73%	70%	70%	74%	67%	54%	73%
Days to Calving	Carcase Wt. (kg)	EMA (sq.cm)	Rib fat (mm)	Rump fat (mm)	RBY (%)	IMF (%)	Docility	ANGUS NZ RBVs	
								BCS	HH
-1.9	+56	+6.6	+0.5	+0	+0.7	+1.1	+21.8	+0	+1
39%	60%	55%	58%	58%	53%	56%	52%	27%	19%

Angus Indexes

Self Replacing Index	Angus Pure	Heifer / Dairy Terminal
+\$66	+\$75	+\$96

Sale notes: Very fleshy type of bull, used over cows

Purchaser:..... Price \$.....

KAIWARA: LOT 18

Born: 16/08/2024

HBN: 1314402413

SIRE

BLACK ROCK OF STERN^{PV}

D: STERN M789^{SV}

S: MACKENZIE OF STERN^{SV}

DAM

KAIWARA 156/21^{SV}

D: KAIWARA 158

S: KAIWARA 365/19^{SV}

May 2026 BREEDPLAN

DIR	DTRS	GL	Birth Wt. (kg)	200 day Wt. (kg)	400 day Wt. (kg)	600 day Wt. (kg)	Mature Cow Wt. (kg)	Milk (kg)	Scrotal
+3.2	-2.4	-5.8	+3.9	+42	+80	+107	+84	+13	+3.3
59%	49%	70%	71%	71%	72%	75%	68%	61%	74%
Days to Calving	Carcass Wt. (kg)	EMA (sq.cm)	Rib fat (mm)	Rump fat (mm)	RBY (%)	IMF (%)	Docility	ANGUS NZ RBVs	
								BCS	HH
-3.4	+55	+4.4	+0.1	+1.2	+0.2	+1.4	+19.9	+0	+1.1
38%	62%	59%	61%	60%	55%	62%	63%	29%	45%
Angus Indexes									
Self Replacing Index			Angus Pure				Heifer / Dairy Terminal		
+\$114			+\$123				+\$113		

Sale notes: Used over heifers, great actual growth rates av 2kg after mating

Purchaser:..... Price \$.....

KAIWARA: LOT 19

Born: 16/08/2024

HBN: 131440246

SIRE

BLACK ROCK OF STERN^{PV}

D: STERN M789^{SV}

S: MACKENZIE OF STERN^{SV}

DAM

FARFIELD MM LAKESIDE P 22^{SV}

D: FARFIELD M 11^{SV}

S: MILLAH MURRAH LAKESIDE L69 (IMP AUS)^{PV}

May 2026 BREEDPLAN

DIR	DTRS	GL	Birth Wt. (kg)	200 day Wt. (kg)	400 day Wt. (kg)	600 day Wt. (kg)	Mature Cow Wt. (kg)	Milk (kg)	Scrotal
+7.4	+0.9	-6.6	+1.8	+38	+78	+99	+78	+18	+2.6
60%	50%	71%	74%	71%	71%	70%	69%	63%	67%
Days to Calving	Carcass Wt. (kg)	EMA (sq.cm)	Rib fat (mm)	Rump fat (mm)	RBY (%)	IMF (%)	Docility	ANGUS NZ RBVs	
								BCS	HH
-3.3	+49	+2.3	+1	+1.8	-0.2	+2.1	+27.7	+0	+1.1
39%	61%	61%	62%	62%	56%	64%	65%	32%	47%
Angus Indexes									
Self Replacing Index			Angus Pure				Heifer / Dairy Terminal		
+\$103			+\$113				+\$125		

Sale notes: Great birth weight to growth spread typical of the black rock sons

Purchaser:..... Price \$.....

KAIWARA: LOT 20

Born: 16/08/2024

HBN: 1314402427

SIRE

BLACK ROCK OF STERN^{PV}

D: STERN M789^{SV}

S: MACKENZIE OF STERN^{SV}

DAM

FARFIELD MM LAKESIDE P 18^{SV}

D: FARFIELD M 19^{SV}

S: MILLAH MURRAH LAKESIDE L69 (IMP AUS)^{PV}

May 2026 BREEDPLAN									
DIR	DTRS	GL	Birth Wt. (kg)	200 day Wt. (kg)	400 day Wt. (kg)	600 day Wt. (kg)	Mature Cow Wt. (kg)	Milk (kg)	Scrotal
+7.2	+1.7	-8.4	+1.9	+43	+92	+111	+93	+21	+2.3
59%	49%	70%	75%	71%	72%	75%	69%	62%	73%
Days to Calving	Carcass Wt. (kg)	EMA (sq.cm)	Rib fat (mm)	Rump fat (mm)	RBY (%)	IMF (%)	Docility	ANGUS NZ RBVs	
								BCS	HH
-3.6	+60	+3.1	+0.5	+1	-0.4	+2.4	+24.9	+0	+1.1
38%	62%	58%	60%	60%	55%	62%	63%	33%	47%
Angus Indexes									
Self Replacing Index			Angus Pure				Heifer / Dairy Terminal		
+\$109			+\$125				+\$130		

Sale notes: Used bounced back well

Purchaser:..... Price \$.....

KAIWARA: LOT 21

Born: 16/08/2024

HBN: 1314402419

SIRE

BLACK ROCK OF STERN^{PV}

D: STERN M789^{SV}

S: MACKENZIE OF STERN^{SV}

DAM

RANGATIRA 20-1754^{SV}

D: RANGATIRA 13-120

S: TANGIHAU TOPGUN 17436^{PV}

May 2026 BREEDPLAN									
DIR	DTRS	GL	Birth Wt. (kg)	200 day Wt. (kg)	400 day Wt. (kg)	600 day Wt. (kg)	Mature Cow Wt. (kg)	Milk (kg)	Scrotal
+4.6	+1.3	-5.6	+3.6	+42	+71	+98	+92	+12	+2.1
58%	48%	67%	73%	70%	71%	69%	67%	62%	74%
Days to Calving	Carcass Wt. (kg)	EMA (sq.cm)	Rib fat (mm)	Rump fat (mm)	RBY (%)	IMF (%)	Docility	ANGUS NZ RBVs	
								BCS	HH
-2.5	+52	+3.6	-0.4	+0.2	+0.1	+2.3	+26	-0.1	+1
39%	60%	58%	60%	60%	54%	61%	62%	34%	49%
Angus Indexes									
Self Replacing Index			Angus Pure				Heifer / Dairy Terminal		
+\$81			+\$102				+\$115		

Sale notes: Good imf, scrotals and milk

Purchaser:..... Price \$.....

KAIWARA: LOT 22

Born: 08/09/2024

HBN: 13144024321



Tattoo: 24321

SIRE

MEADOWSLEA P599^{SV}

D: MEADOWSLEA M498^{SV}

S: MEADOWSLEA L226^{SV}

DAM

KAIWARA 15/21^{SV}

D: KAIWARA 13144013414

S: MILWILLAH NAPA N498 (IMP AUS)

May 2026 BREEDPLAN

DIR	DTRS	GL	Birth Wt. (kg)	200 day Wt. (kg)	400 day Wt. (kg)	600 day Wt. (kg)	Mature Cow Wt. (kg)	Milk (kg)	Scrotal
+0.7	-0.8	-2.7	+4	+37	+69	+89	+84	+15	+2.8
52%	44%	61%	70%	69%	70%	74%	66%	54%	73%
Days to Calving	Carcase Wt. (kg)	EMA (sq.cm)	Rib fat (mm)	Rump fat (mm)	RBY (%)	IMF (%)	Docility	ANGUS NZ RBVs	
								BCS	HH
-2.4	+34	+4.7	+1.8	+1.3	+0.1	+2	+19.3	+0	+0.4
38%	60%	55%	58%	58%	53%	56%	52%	20%	6%
Angus Indexes									
Self Replacing Index			Angus Pure				Heifer / Dairy Terminal		
+\$78			+\$77				+\$96		

Sale notes:

Purchaser:..... Price \$.....

KAIWARA: LOT 23

Born: 06/09/2024

HBN: 13144024323

SIRE

MEADOWSLEA P599^{SV}

D: MEADOWSLEA M498^{SV}

S: MEADOWSLEA L226^{SV}

DAM

KAIWARA 686/14

D: KAIWARA 853

S: KAIWARA 617

May 2026 BREEDPLAN									
DIR	DTRS	GL	Birth Wt. (kg)	200 day Wt. (kg)	400 day Wt. (kg)	600 day Wt. (kg)	Mature Cow Wt. (kg)	Milk (kg)	Scrotal
-1.7	-0.2	-2.2	+4.7	+32	+66	+89	+87	+16	+1.8
50%	38%	53%	73%	68%	69%	73%	65%	50%	56%
Days to Calving	Carcase Wt. (kg)	EMA (sq.cm)	Rib fat (mm)	Rump fat (mm)	RBY (%)	IMF (%)	Docility	ANGUS NZ RBVs	
								BCS	HH
-3.8	+36	+2.7	+0.9	+0.3	+0.4	+1.1	+18.4	+0	+0.4
35%	58%	54%	57%	57%	52%	53%	43%	20%	6%
Angus Indexes									
Self Replacing Index			Angus Pure				Heifer / Dairy Terminal		
+\$81			+\$62				+\$84		

Sale notes:

Purchaser:..... Price \$.....



KAIWARA: LOT 24

Born: 21/09/2024

HBN: 13144024105



Tattoo: 24105

SIRE

MEADOWSLEA P599^{SV}

D: MEADOWSLEA M498^{SV}

S: MEADOWSLEA L226^{SV}

DAM

KAIWARA 658/14

D: KAIWARA 398

S: TE MANIA 09 450

May 2026 BREEDPLAN

DIR	DTRS	GL	Birth Wt. (kg)	200 day Wt. (kg)	400 day Wt. (kg)	600 day Wt. (kg)	Mature Cow Wt. (kg)	Milk (kg)	Scrotal
-1.3	-3.1	-2.9	+4.7	+45	+80	+112	+91	+17	+2
53%	45%	59%	74%	70%	71%	74%	67%	55%	62%
Days to Calving	Carcase Wt. (kg)	EMA (sq.cm)	Rib fat (mm)	Rump fat (mm)	RBY (%)	IMF (%)	Docility	ANGUS NZ RBVs	
								BCS	HH
-2.6	+50	+4.8	+0.3	+0.1	+0.4	+1.1	+19.7	+0	+0.4
40%	61%	56%	59%	59%	54%	57%	53%	20%	6%
Angus Indexes									
Self Replacing Index			Angus Pure				Heifer / Dairy Terminal		
+\$80			+\$93				+\$97		

Sale notes:

Purchaser:..... Price \$.....

KAIWARA: LOT 25

Born: 22/09/2024

HBN: 13144024215

SIRE

MEADOWSLEA P599^{SV}

D: MEADOWSLEA M498^{SV}

S: MEADOWSLEA L226^{SV}

DAM

KAIWARA 637/19

D: KAIWARA 616/14

S: TE MANIA 12 579^{SV}

May 2026 BREEDPLAN									
DIR	DTRS	GL	Birth Wt. (kg)	200 day Wt. (kg)	400 day Wt. (kg)	600 day Wt. (kg)	Mature Cow Wt. (kg)	Milk (kg)	Scrotal
-1.8	-4.9	-2	+5.2	+42	+82	+117	+107	+18	+2.2
51%	42%	57%	73%	67%	67%	73%	66%	52%	73%
Days to Calving	Carcase Wt. (kg)	EMA (sq.cm)	Rib fat (mm)	Rump fat (mm)	RBY (%)	IMF (%)	Docility	ANGUS NZ RBVs	
								BCS	HH
-2.4	+58	+4.4	+0.6	-0.1	+0.4	+1.5	+15.9	+0	+0.4
38%	58%	54%	57%	57%	52%	56%	50%	20%	6%
Angus Indexes									
Self Replacing Index			Angus Pure			Heifer / Dairy Terminal			
+\$65			+\$76			+\$97			

Sale notes:

Purchaser:..... Price \$.....



KAIWARA: LOT 26

Born: 03/09/2024

HBN: 13144024159



Tattoo: 24159

SIRE

MEADOWSLEA P599^{SV}

D: MEADOWSLEA M498^{SV}

S: MEADOWSLEA L226^{SV}

DAM

KAIWARA 53/17

D: KAIWARA 195

S: TE MANIA 12 579^{SV}

May 2026 BREEDPLAN

DIR	DTRS	GL	Birth Wt. (kg)	200 day Wt. (kg)	400 day Wt. (kg)	600 day Wt. (kg)	Mature Cow Wt. (kg)	Milk (kg)	Scrotal
-2.5	-5.7	-1.9	+4.3	+32	+62	+83	+71	+18	+1.4
52%	43%	58%	73%	69%	70%	74%	66%	53%	60%
Days to Calving	Carcase Wt. (kg)	EMA (sq.cm)	Rib fat (mm)	Rump fat (mm)	RBY (%)	IMF (%)	Docility	ANGUS NZ RBVs	
								BCS	HH
-3.7	+36	+2.9	+2.3	+2.2	+0	+1.6	+15.4	+0	+0.4
38%	60%	55%	58%	58%	53%	56%	51%	20%	6%
Angus Indexes									
Self Replacing Index			Angus Pure				Heifer / Dairy Terminal		
+\$78			+\$61				+\$78		

Sale notes: Compact easy doing type bull

Purchaser:..... Price \$.....

KAIWARA: LOT 27

Born: 13/09/2024

HBN: 13144024211



Tattoo: 24211

SIRE

MEADOWSLEA P599^{SV}

D: MEADOWSLEA M498^{SV}

S: MEADOWSLEA L226^{SV}

DAM

KAIWARA 723/16

D: KAIWARA 809

S: MATAURI 013J002

May_2026_BREEDPLAN

DIR	DTRS	GL	Birth Wt. (kg)	200 day Wt. (kg)	400 day Wt. (kg)	600 day Wt. (kg)	Mature Cow Wt. (kg)	Milk (kg)	Scrotal
-1	-2.2	-4.1	+4.9	+39	+72	+93	+89	+14	+2.1
51%	39%	57%	73%	70%	70%	74%	67%	52%	59%
Days to Calving	Carcase Wt. (kg)	EMA (sq.cm)	Rib fat (mm)	Rump fat (mm)	RBY (%)	IMF (%)	Docility	ANGUS NZ RBVs	
								BCS	HH
-3.7	+40	+3	+1.7	+0.8	+0.1	+1.1	+22.3	+0	+0.4
35%	59%	54%	57%	57%	52%	55%	47%	20%	6%
Angus Indexes									
Self Replacing Index			Angus Pure				Heifer / Dairy Terminal		
+\$91			+\$78				+\$89		

Sale notes: Grandson of Tangihau Top gun the \$86k bull renowned for producing deep hill country cattle

Purchaser:..... Price \$.....

CONDITIONS OF SALE

- a. The sale will be conducted under the usual conditions of the North Canterbury Stock & Station Agents Association.
- b. Each lot becomes the property of the purchaser at the fall of the hammer.
- c. The vendors guarantee all bulls from the date of sale for structural soundness, feet, infertility or incapacity of service for three years. Under these circumstances we will replace the bull with a satisfactory replacement bull or issue a credit equal to the purchase price less the salvage value. This credit may be used at future bull sales. A veterinary certificate shall be produced by the purchaser when required. The guarantee does not cover incapacity or infertility due to injury, illness or cover costs for loss of profit due to partial fertility or neglect by the purchaser. The purchaser is to keep the bull in reasonable health and condition.
- d. Free delivery of bulls in the South Island and to Feilding in the North Island within three weeks of the sale.
- e. All bulls are tuberculosis tested in accordance with statutory regulations.

GST: All bulls sold are G.S.T exclusive.

PURCHASING REBATE: All intending purchasers MUST register at the sales office prior to the sale. A purchasing rebate of 6 % will be paid to non participating livestock companies and recognized independent livestock agents with approved credit facilities introducing and/or accompanying new buyers to the sale.

Arrangements must be made with the auctioneer PRIOR to the sale and settlement made on the buyers behalf within **14 days**.



AngusNZ EBVs Explained

EBVs and Selection Indexes remove the effects of non-genetic factors (e.g. feeding regimes, animal age) to provide the best measure of an animal's genetic merit.



To ensure the accuracy of EBV and Index data, AngusNZ combine with Angus Australia to create a reference population known as the TransTasman Angus Cattle Evaluation (TACE).

By using TACE – along with visual and structural appraisal – will assist in creating a balanced phenotypical and genotypical breeding outcome.

FOUR STEPS TO SELECTING YOUR NEXT ANGUSNZ SIRE:

1. Consider your individual EBVs of importance
2. Consider other traits of importance (e.g. visual assessment)
3. Identify the **AngusNZ selection** index of most relevance to your breeding programme
4. **Rank animals** using the chosen Selection Index.

AngusNZ publishes the following TACE EBVs and Selection Indexes. Please note that only EBVs from the same TACE analysis can be directly compared.

Growth EBVs	Fertility & Birth EBVs	Carcase EBVs	Other EBVs	Selection Indexes
Birth Weight	Scrotal Size	Carcase Weight	Docity	Self Replacing
200 Day Growth	Days to Calving	Eye Muscle Area	Structural Assessment	AngusPure
400 Day Weight	Gestation Length	Rib Fat		Heifer Dairy Terminal
600 Day Weight	Calving Ease Direct	Rump Fat		<i>Details about the Angus Selection indexes can be found at:</i> breedplan.une.edu.au/media/bqjbnnbh/using-new-zealand-angus-selection-indexes.pdf
Milk (Maternal)	Calving Ease Daughters	Retail Beef Yield		
Mature Cow Weight		Intramuscular Fat		
	For more information, including EBV descriptions and how to use them go to: breedplan.une.edu.au/media/dtqpdm34/using-and-understanding-breedplan-ebvs.pdf			

Beef & Lamb Genetics have developed a new tool to make it easier to find the best bulls for your farming operation. Using a series of buttons and sliders, you can refine down your breeding criteria. On a click of a button, nProve then generates a list of bulls that best fit that criteria. It's free to use, there's no need to register and there's also helpful tips to get started. Try it out at www.nprove.nz



Research Breeding Value (RBV) Definitions

Hip Height RBV

Hip Height RBV estimates genetic differences in skeletal frame size, measured at the hip. Taller animals generally have a larger mature frame size and higher growth potential but may also have greater maintenance requirements. This trait is useful for managing frame size within a herd to match production system and market targets.

Body Condition Score RBV

Body Condition Score RBV estimates genetic differences in body condition score, reflecting the amount of fat cover and energy reserves an animal carries. Higher values indicate animals whose progeny are expected to maintain greater body condition. BCS is an indicator of metabolic efficiency and resilience, with implications for fertility and cow longevity.

ANGUS NZ BREED AVERAGES FOR 2024 CALVES									
DIR	DTRS	GL	Birth Wt. (kg)	200 day Wt. (kg)	400 day Wt. (kg)	600 day Wt. (kg)	Mature Cow Wt.(kg)	Milk (kg)	Scrotal
+1.7	+1.3	-4.2	+4	+42	+80	+102	+91	+15	+2.1
Days to Calving	Carcase Wt. (kg)	EMA (sq.cm)	Rib fat (mm)	Rump fat (mm)	RBV (%)	IMF (%)	Docility	ANGUS NZ RBVs	
-4.3	+50	+3.5	+1.4	+1.5	+0.3	+1.1	+22.9	BCS	HH
								+0	+0.2
Angus Indexes									
Self Replacing Index			Angus Pure			Heifer / Dairy Terminal			
+\$120			+\$122			+\$106			

ANGUS
NEW ZEALAND

BALANCE DELIVERS RETURNS

BRED FOR BALANCE
Strong maternal traits. Quality carcasses. Superior genetics.

FARMED FOR BALANCE
Performs everywhere — from hill country to finishing systems.

RECORDED FOR BALANCE
Agile performance data recorded for NZ conditions and market-focused indexes.

CONSUMED FOR BALANCE
Carcase quality that delivers on-farm and on the plate.

Angus NZ delivers **Better Balanced Beef**

www.angusnz.com

MAY 2026 Percentile Band for 2024 born calves

Band	CE (%)	CE-D (%)	GL (days)	BW (kg)	200D (kg)	400D (kg)	600D (kg)	MCW (kg)	Milk (kg)	SS (cm)	DC	Doc	OW (kg)	EMA (sq cm)	Rib (mm)	Fat (mm)	RBV (%)	IMF (%)	SR Index (\$)	AP Index (\$)	HDT Index (\$)	BCS	Hip Height
1%	9.8	8.8	-9.9	-0.4	64	113	147	153	27	4.6	-8.2	46.7	87	11.8	5.7	7	1.8	4.5	199	223	141	0.1	1.7
5%	8.1	7	-8	1	57	102	133	132	23	3.8	-6.9	39	75	9	4.2	5.2	1.3	3.4	172	190	132	0.1	1
10%	7.1	6	-7.1	1.8	54	97	126	122	21	3.3	-6.2	35	69	7.6	3.6	4.3	1.1	2.8	160	174	127	0.1	0.7
15%	6.3	5.3	-6.5	2.2	52	94	121	116	20	3.1	-5.8	32.3	66	6.8	3.1	3.7	0.9	2.5	151	163	124	0.1	0.6
20%	5.6	4.7	-6	2.6	50	91	117	111	19	2.9	-5.5	30.3	63	6.1	2.8	3.2	0.8	2.2	145	155	121	0	0.5
25%	5	4.1	-5.6	2.9	48	88	114	107	18	2.7	-5.2	28.7	60	5.6	2.5	2.9	0.7	1.9	139	148	119	0	0.4
30%	4.4	3.6	-5.3	3.1	47	86	111	103	17	2.6	-5	27.3	58	5.1	2.3	2.6	0.6	1.7	134	142	117	0	0.4
35%	3.8	3.1	-5	3.4	46	84	109	100	16	2.4	-4.8	26.1	56	4.6	2	2.3	0.5	1.5	130	136	114	0	0.3
40%	3.3	2.6	-4.7	3.6	45	83	106	97	16	2.3	-4.6	24.9	54	4.2	1.8	2	0.5	1.4	126	131	112	0	0.3
45%	2.8	2.1	-4.4	3.8	43	81	104	93	15	2.2	-4.4	23.8	52	3.8	1.6	1.8	0.4	1.2	122	126	110	0	0.2
50%	2.2	1.6	-4.2	4.1	42	79	102	91	15	2	-4.3	22.7	50	3.4	1.4	1.5	0.3	1	119	121	108	0	0.2
55%	1.6	1.2	-3.9	4.3	41	78	100	87	14	1.9	-4.1	21.7	49	3	1.2	1.3	0.2	0.9	115	117	105	0	0.1
60%	1.1	0.6	-3.6	4.5	40	76	97	84	13	1.8	-3.9	20.6	47	2.6	1	1	0.2	0.7	111	111	103	0	0.1
65%	0.5	0.1	-3.4	4.7	39	75	95	81	13	1.7	-3.7	19.4	45	2.2	0.8	0.7	0.1	0.5	107	106	100	-0	0
70%	-0.2	-0.5	-3.1	5	38	73	92	78	12	1.5	-3.5	18.2	43	1.8	0.5	0.4	0	0.4	103	101	98	-0	0
75%	-0.9	-1.1	-2.8	5.2	37	71	90	74	11	1.4	-3.3	16.8	40	1.3	0.3	0.1	-0.1	0.2	99	95	95	-0	-0
80%	-1.7	-1.8	-2.4	5.5	35	69	87	70	10	1.2	-3.1	15.3	38	0.8	0	-0.3	-0.2	0	94	88	91	-0	-0.1
85%	-2.8	-2.6	-2	5.9	34	66	83	65	10	1	-2.8	13.5	35	0.2	-0.3	-0.7	-0.3	-0.3	89	80	87	-0	-0.2
90%	-4.2	-3.8	-1.4	6.3	32	63	78	59	8	0.8	-2.4	11.2	31	-0.6	-0.8	-1.3	-0.5	-0.6	82	69	82	-0	-0.4
95%	-6.6	-5.6	-0.5	7	28	57	71	50	6	0.4	-1.8	7.7	24	-1.8	-1.5	-2.2	-0.8	-1	71	55	74	-0.1	-0.7
99%	-11.9	-9.3	1.2	8.2	22	47	57	31	3	-0.3	-0.6	1.1	13	-4.2	-2.8	-4.1	-1.3	-1.9	48	29	52	-0.1	-1.6

FMG Premier Bull Sale Insurance Form

What is FMG Premier Bull Insurance?

On receiving a completed FMG Premier Bull Sale Insurance form from an existing FMG client, FMG provides insurance cover for bulls including theft, death caused by certain accidents, injury, disease, illness or humane destruction and permanent infertility, provided the bull's purchase price does not exceed \$50,000 +GST. Please contact an FMG representative if you are not an FMG client, or you purchased a bull for over \$50,000+GST.

What is the length of cover?

Your specified bull(s) can be insured for up to 12 months on FMG Premier Bull Sale Insurance.

What are the benefits?

✓ <i>Infertility</i>	Cover if your specified bull has to be intentionally slaughtered due to permanent infertility caused by certain accidents, disease, or illness.
✓ <i>Theft or death</i>	Cover for your specified bull for theft or death caused by certain accidents, disease, injury, or illness (including while in transit anywhere in New Zealand).
✓ <i>Vet costs</i>	Cover up to \$500 for treatment of your specified bull to prevent death.

What will FMG pay?

FMG will pay the fair market value of your specified bull, less any amount you receive for the sale of the carcass, up to the amount shown on the insurance certificate.



Apply

Please fill in this form as soon as you have purchased your new bull(s) and hand it to your FMG representative. This form **MUST** be fully completed for Premier Bull Sale Insurance.

FMG Account Number:	FMG Account Name:
Purchaser's full name:	Date of purchase:
Purchaser's address:	
Purchaser's phone:	Purchaser's email:

Agent arranging insurance on behalf of the purchaser? Provide your full name:

Lot:	Tag:	\$	Breed:	DOB:

Please select your payment method: FMG direct Farmlands Rural Co.

NO VERBAL INSTRUCTIONS WILL BE ACCEPTED	Signature of Purchaser: _____ Date: / /
<p>Disclaimer Please note this is only a summary of the product and is subject to our specific product documentation. For full details, you should refer to the policy document. You can get these documents, and any other information you need, from your FMG representative, by calling us or visiting, https://www.fmg.co.nz/what-we-cover/fmg-policy-words/animals/livestock</p> <p>Privacy FMG is collecting your personal information in order to provide you with the insurance you are requesting. The information is collected and held by FMG. Contact us if you have any questions or concerns, want access to the information we have about you, or you need us to update your information.</p>	



Bull Purchaser Instruction Slip

Please complete this slip and hand to the Booking Clerk before leaving the sale.

Purchaser's full name:			Buyer No:	
Agents full name and relationship to the owner:				
If purchasing on behalf of, what is your relationship to owner?				
Purchaser's postal address:			NAIT No.:	
Delivery address:			Post Code:	
Farm/business name:				
Purchaser's email:			Purchaser's phone:	
Lot:	Tag:	\$	Breed:	DOB:
Transport instructions:			Stock firm to be charged:	

<p>I acknowledge and agree for my personal information contained in this Purchaser Instruction to be shared between the parties involved in this bull sale, including but not limited to the vendor or their representatives, livestock agencies and transport operators. The information is shared for the purpose of completing the sale and purchase of the bull.</p>		
<p>NO VERBAL INSTRUCTIONS WILL BE ACCEPTED</p>	<p>Signature of Purchaser or Agent:</p>	<p>Date: / /</p>



BULL-PROOF

YOUR ASSETS AGAINST RURAL THEFT.

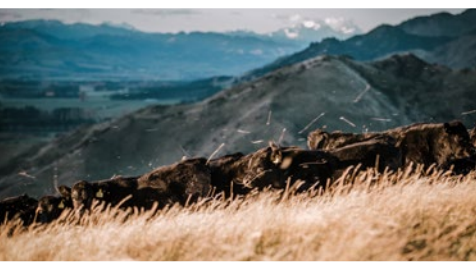
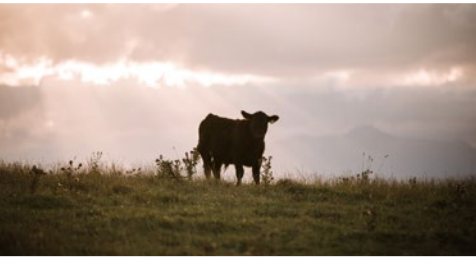
Theft and burglaries occur more often than you think, and the number of theft claims is increasing.

Every year FMG supports over 1,000 families impacted by theft and burglary. Alarmingly, 1 in 5 clients at rural addresses have been targeted more than once in the same year!

We think now's the time to put a lock on that trend. We have teamed up with NZ Police to create a Rural Crime Prevention Guide to help prevent theft and burglaries at your rural property – find out more at fmg.co.nz/rural-theft

We're here for the good of the country.

FMG
Advice & Insurance





Exceptional beef

Starts with exceptional bulls
Thank you for supporting our family-
business. We are truly grateful.

More info at www.kaiwarafarm..com